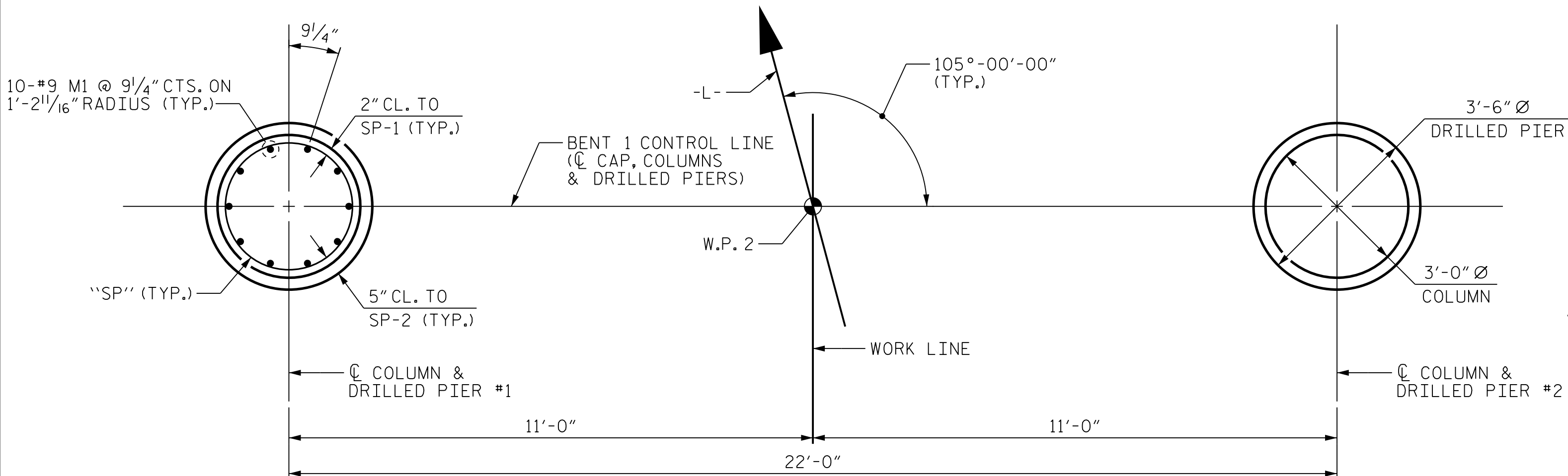


5/7/2025
7:24:52 PM

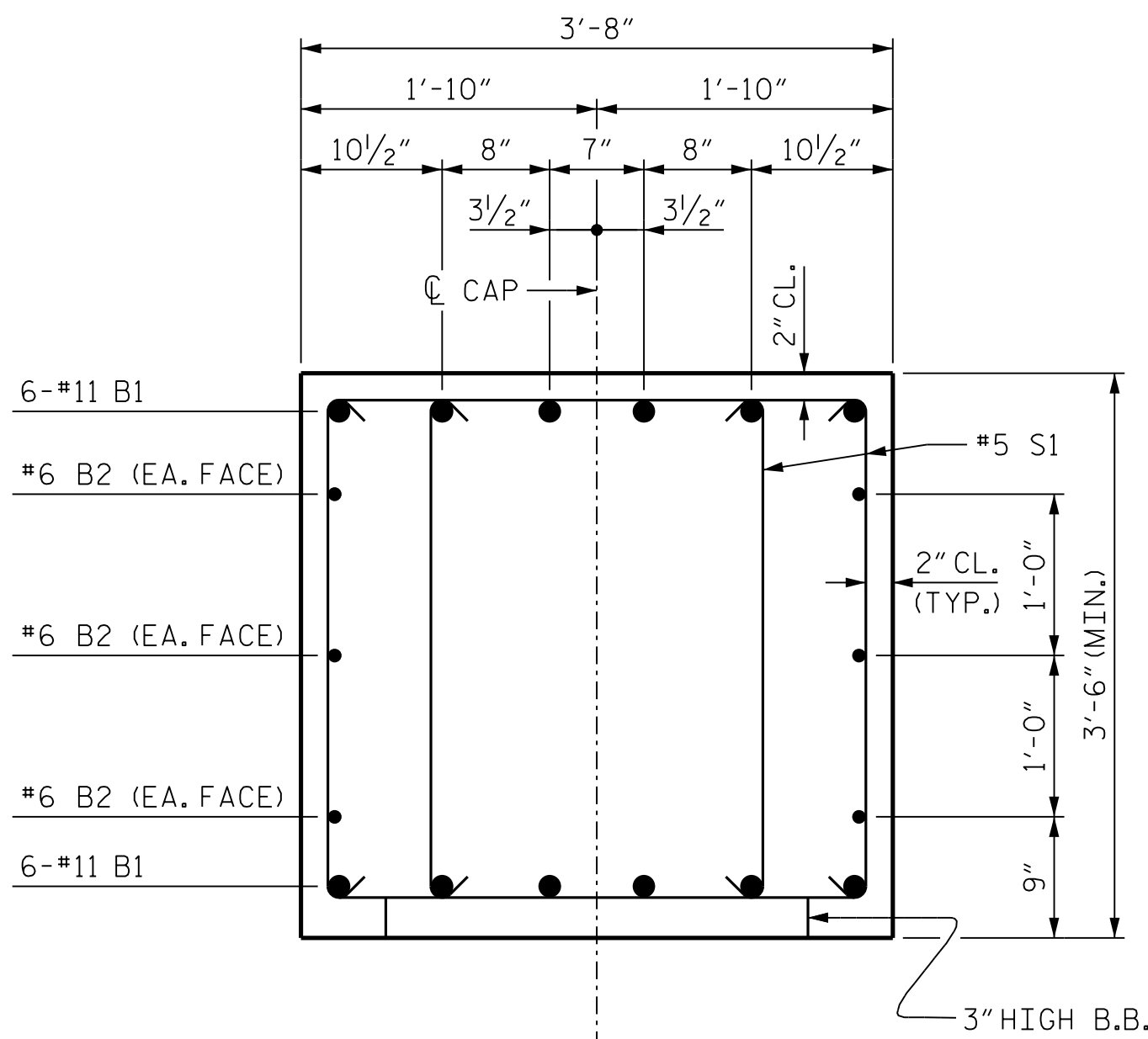
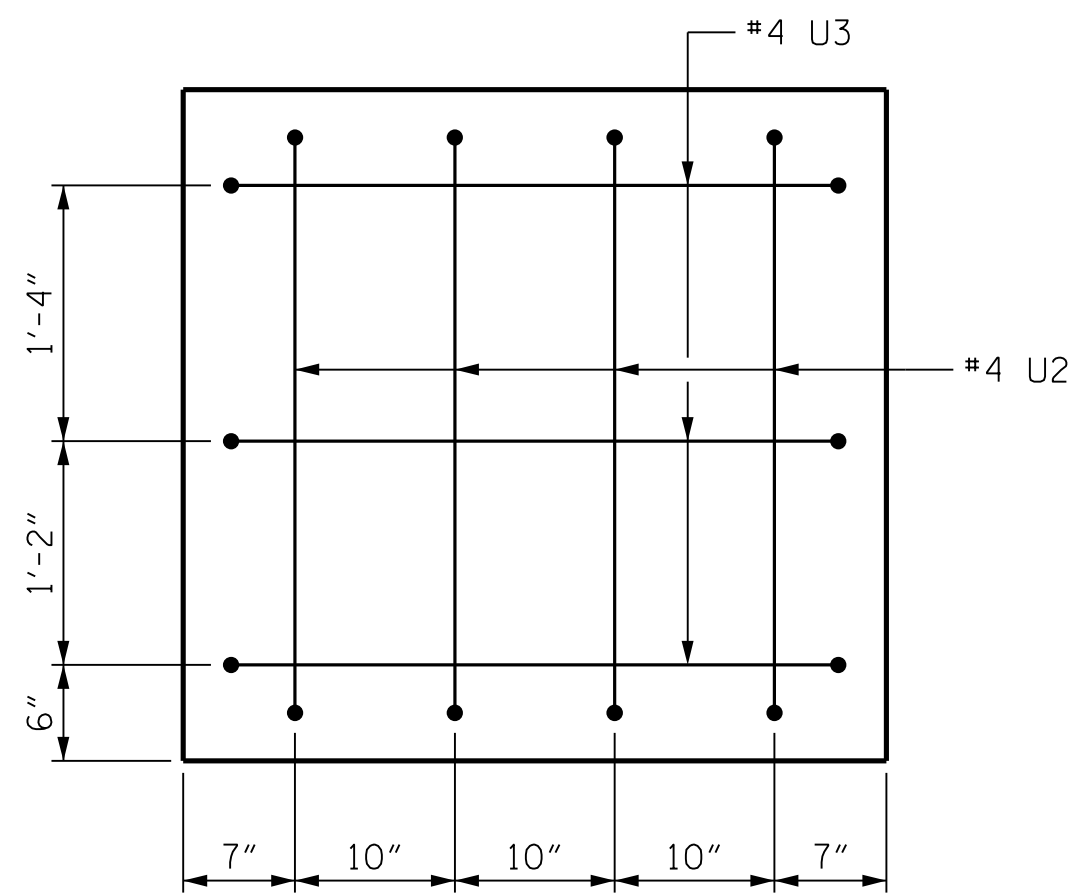
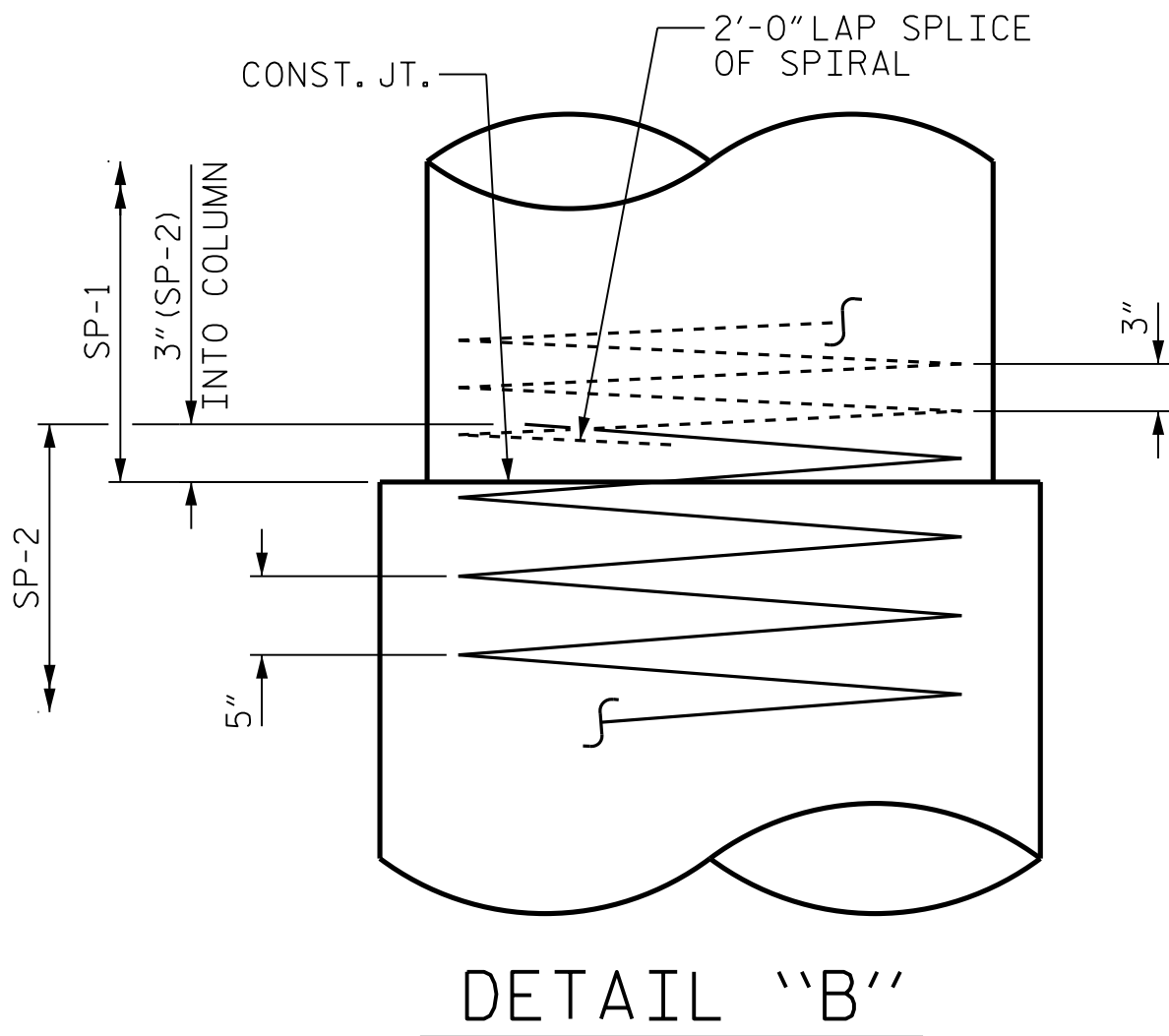
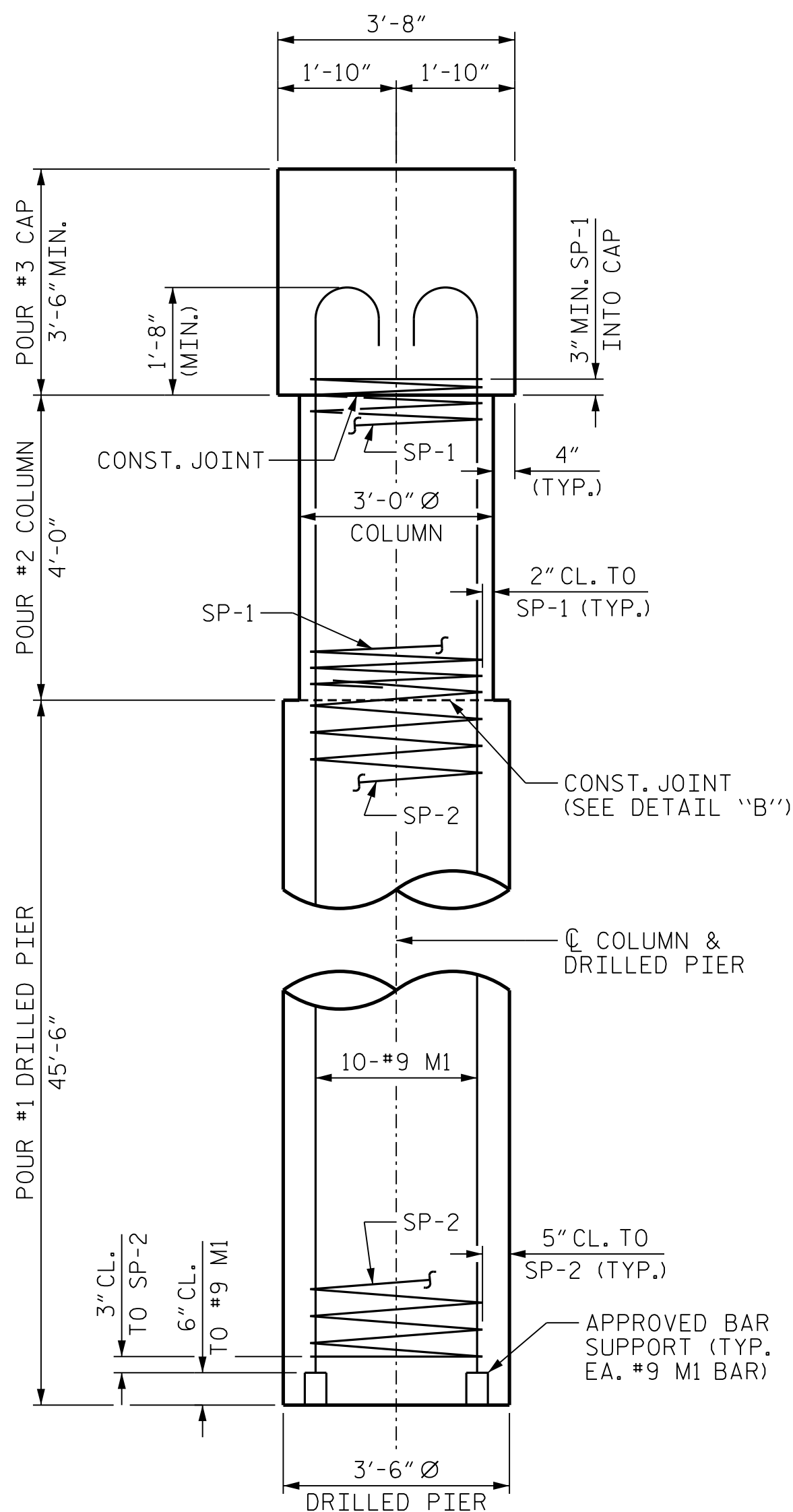
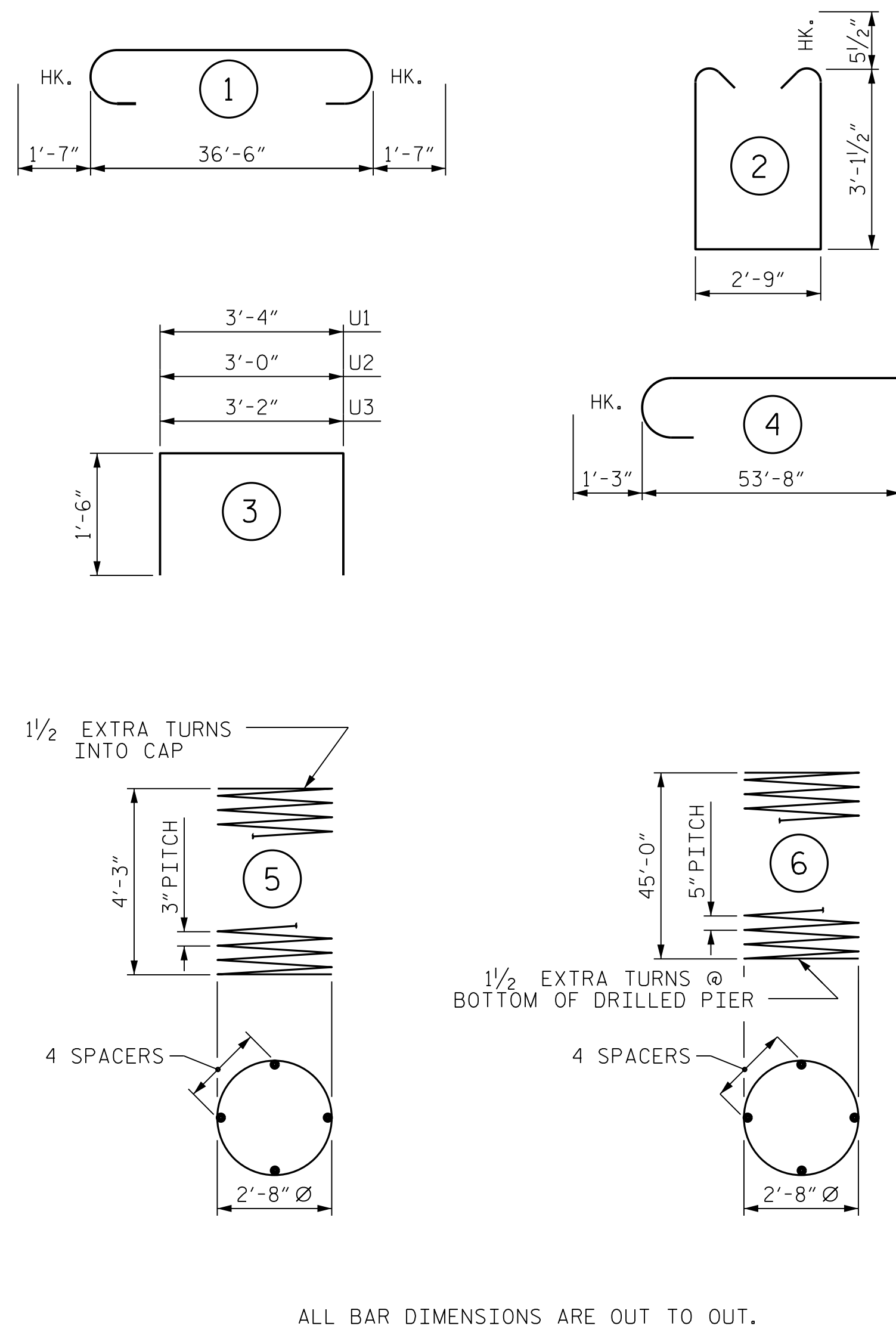
User: blanning

Filename: N:\NC Bridges\W3001.02_Polk 29\BP14-R041\Structures\01_045-BP14-R041_SML-BIB-740029.dgn



SPAN B

SPAN A



BAR TYPES

BILL OF MATERIAL

BENT 1

BAR	NO.	SIZE	TYPE	LENGTH	WEIGHT
B1	12	#11		39'-8"	2529
B2	6	#6	STR	36'-6"	329
B3	4	#4	STR	14'-8"	39

M1	20	#9	4	54'-11"	3734
----	----	----	---	---------	------

S1	112	#5	2	9'-11"	1158
----	-----	----	---	--------	------

U1	35	#4	3	6'-4"	148
----	----	----	---	-------	-----

U2	8	#4	3	6'-0"	32
----	---	----	---	-------	----

U3	6	#4	3	6'-2"	25
----	---	----	---	-------	----

REINFORCING STEEL					7,994 LBS.
-------------------	--	--	--	--	------------

BAR	NO.	SIZE	TYPE	LENGTH	WEIGHT
SP-1	2	*	5	152'-8"	204
SP-2	2	**	6	900'-8"	1879

SPIRAL COLUMN REINFORCING STEEL					2,083 LBS.
---------------------------------	--	--	--	--	------------

* THE SP-1 SPIRAL REINFORCING STEEL SHALL BE W20 OR D-20 COLD DRAWN WIRE OR #4 PLAIN OR DEFORMED BAR.

** THE SP-2 SPIRAL REINFORCING STEEL SHALL BE W31 OR D-31 COLD DRAWN WIRE OR #5 PLAIN OR DEFORMED BAR.

CLASS A CONCRETE BREAKDOWN

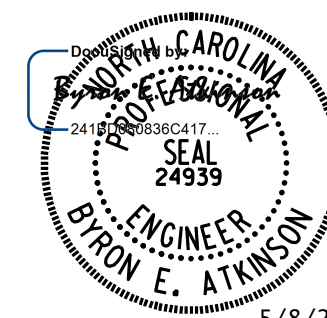
POUR #2 (COLUMN)	2.1 C.Y.
POUR #3 (CAP)	18.1 C.Y.
TOTAL	20.2 C.Y.

PROJECT NO. BP14.R041
POLK COUNTY
STATION: 20+97.50 -L-

SHEET 2 OF 2

STATE OF NORTH CAROLINA
DEPARTMENT OF TRANSPORTATION
RALEIGH

SUBSTRUCTURE
BENT 1



5/8/2025

DOCUMENT NOT CONSIDERED FINAL
UNLESS ALL SIGNATURES COMPLETED



MI ENGINEERING
1011 SCHAUB DRIVE, SUITE 100
RALEIGH, NC 27606
(919) 851-6606
FIRM PE NUMBER : P-0671

REVISIONS						SHEET NO.
NO.	BY:	DATE:	NO.	BY:	DATE:	
1			3			S-23
2			4			

TOTAL SHEETS
29

DRAWN BY : B.E. LANNING	DATE : 03/25
CHECKED BY : B.E. ATKINSON	DATE : 03/25
DESIGN ENGINEER OF RECORD : B.E. ATKINSON	DATE : 04/25